

# External Masters and Mistresses

*Notes for external masters & Mistresses - refereed in this section as "externals"*

## Rules

Before you get too excited we have some basic rules for "externals" as follows:

- Every new external has to be validated
- All communication is to be via the JiC message system (this helps prevent conflicting requests from Jennifer)
- Externals must respect a subs limits
- You will not copy a subs pictures or text (even to your local computer)
- If you give an order that is in conflict with "Jennifer" or her rules the sub can ignore it.
- No financial payments/gifts are to be requested by you (even if a sub allows it in their limits)

## How to become an "External"

The main way to become an external is a sub adding your email in their options. This is to allow for another way to communicate if needed. Communication is important in any relationship so whilst it is recommended that you primarily use the message system to prevent conflicting orders with Jennifer it is good to have a backup too 😊

Externals can also be added directly by Liz but this requires that you validate yourself with a couple of requested pictures over email. If this is of interest please pm Liz directly in fetlife.

Externals login much the same as normal users with a few noticeable differences:

- Extra keywords are available to set mood, chastity and denial
- You can add trigger events if they have a remote controllable device (or simply trigger the camera)
- More information is shown such as Last viewing times, GPS position (if set), status of remote devices and Limits

## Setting triggers

Device:  Level:  % Time (seconds):

You can take a picture of your sub or activate remote devices by setting a trigger. They need to be in the message system and you are best not to have a time delay of less than 12 seconds when you trigger an action. Most users will also not have remote devices linked unless required.

## Multiple subs / SlaveMarket

If you manage more than one sub it will be easier to use the overview page ( <https://play-link.com/jennifer/control.php> ). To start with you will be assigned a trust level of 0. If you would like to view the SlaveMarket, set mood and denial values for your subs you need to be validated. To be validated, your profile picture (it is not seen by your subs) must be a picture of you holding a piece of paper with the date and your name in HANDWRITING. In addition, if you want to be registered as a female it needs to be obvious that's what you are! Once validated you can change your profile picture. The purpose of this picture is in addition to proving you are real should also show you are different than your sub.

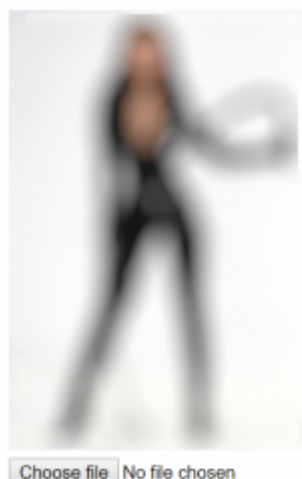
Once validated with a trust level above 0 you will then be able to view Slaves available in the slave market (based on your sex). When selecting a slave it is your responsibility to strike up a conversation in the message system. If it looks like you have a match we recommend you ask them to lock their account to you for a trial period of 30 days before extending.

## Control view

To get the best overview of your slaves you are best to start in the [control view](#). This can be broken into 3 sections:

### Your settings

#### Super External Control Centre



Name:   
Email:   
Sex: Female  
Trust Level: 2  
☒ Share profile image with subs

No file chosen

*Your trust level allows you to view the SlaveMarket and set values for your subs.*

In this area, you can set the name you want to be referred to by your subs, your email address, picture, notification and if subs are allowed to see your picture.

From the screenshot above you will see that this user has a trust level 2 (the highest). If you are a lower level (the default is 0) you will be given instructions on how to raise this. Normally a specific photo will be requested but you also do other things such as check your location (with your permission) .

## Messagebox

The second area has a simple text box where you (or the moderators) can store notes on your subs or messages for the moderators. This is useful for various reasons such as letting the moderators know what you are planning to do to a sub (without the sub knowing) so the mods don't give them a conflicting task. Or a mod may give you some extra information.

## subs

### Subs

Add sub:   Enter a mistress code from a new sub you want to control or visit the [SlaveMarket](#)



**Jennifer** Mood:  [No chastity][Can Cum]  
 Set Chastity:  Days Set Denial:  Days   
 Last Viewed: 2 hours ago Sub not locked to you  
 Force Task:

What you can do in the sub area depends on your trust level. The external user in our screenshots is level 2. Currently, the trust levels are as follow:

- 0 - You can view your subs profile picture with an overview of their status - clicking on their name will allow you to view their messages (to talk to them, lower mood, set denial, set chastity and trigger actions if online)
- 1 - As above but also view the SlaveMarket to add more slaves from the system.
- 2 - As above but you can also reduce chastity, denial and raise mood

All levels, in addition, can set custom tasks for a sub. These are based on the main tasks that you can select from the dropdown list before editing. Editing the tasks hopefully is simple but soon will be even easier when this is changed to use the new task editor. Feel free to click the force task [Go] button as nothing will happen till you click send on the following page.

## Getting started

By default a sub can drop you anytime they like. Image to scenario: You msg: Slave, show me a picture of you eating cum or I will drop Jennifers mood to 2%. Instead of doing the task that he did not want to do he may just drop you as an external and you would not be able to punish him. However, it is recommended when controlling someone new that you insist them to set the lock (in their options) so they are committed to you for 7 days. At the end of this time, if it is working you can agree a longer period for them to be locked to you. When they are locked they will not be able to remove you as an external.

Have a sub locked to you should make them very attentive to please you. Not only could you set their mood level to below 10% (risking their exposure) you could also set long periods of chastity or denial



From:

<https://play-link.com/wiki/> - **PlayLink**

Permanent link:

<https://play-link.com/wiki/doku.php?id=external&rev=1511278214>



Last update: **2017/11/21 15:30**